



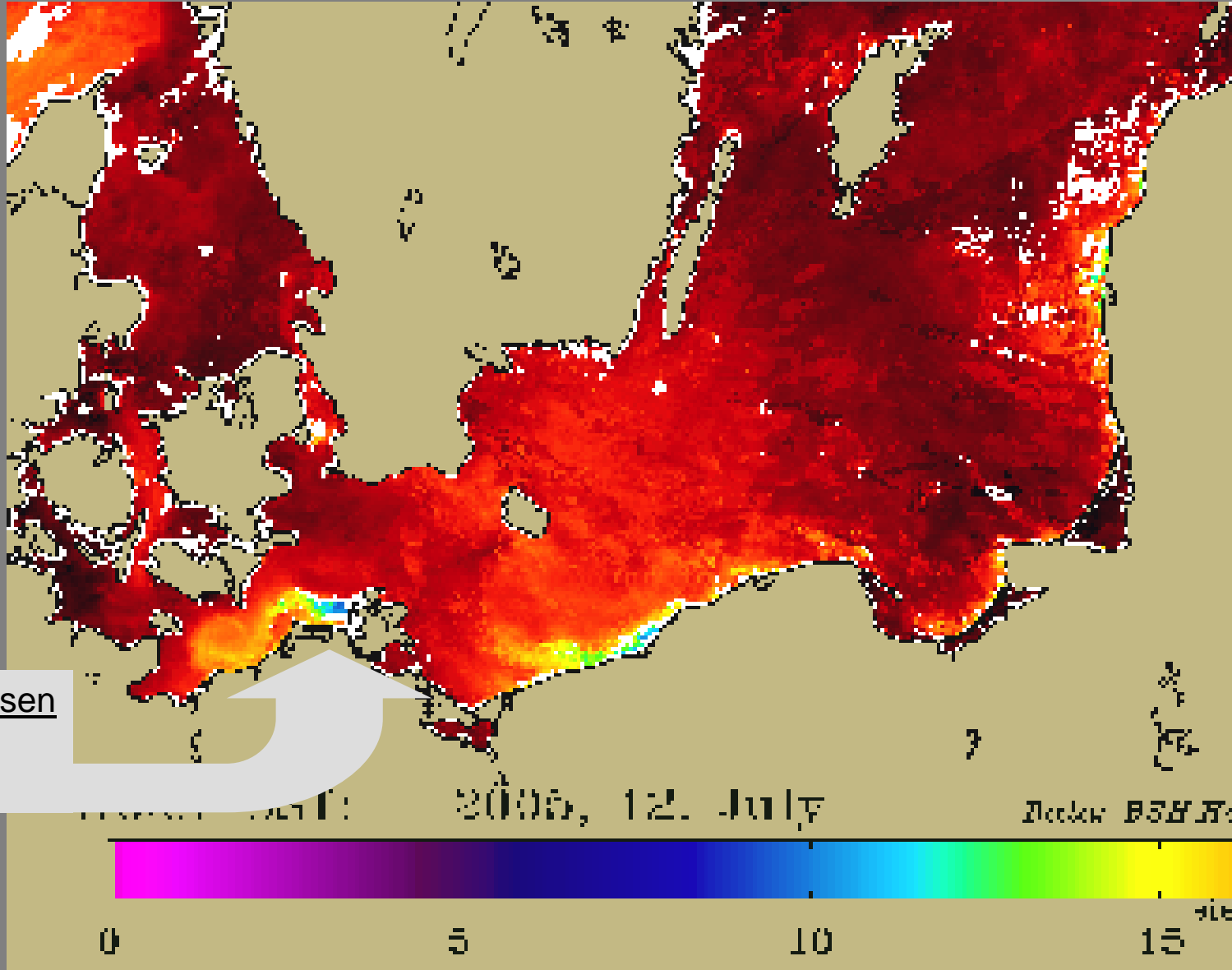
Nationalparke unter Wasser – Vielfalt und Zustand der geschützten Lebensräume in Ostsee und Bodden

Sven Dahlke
Ernst-Moritz-Arndt-Universität Greifswald
Biologische Station Hiddensee
Biologenweg 15, 18565 Kloster / Insel Hiddensee

25 Jahre Ostsee-Nationalparke – Tafelsilber gut angelegt?

16. Podiumsgespräch, DMM Stralsund, 29. April 2015

Mittlere Wasseroberflächentemperatur
der Ostsee am 12. Juli 2005, gemessen
von den NOAA-Satelliten



Quelle: www.io-warnemuende.de/







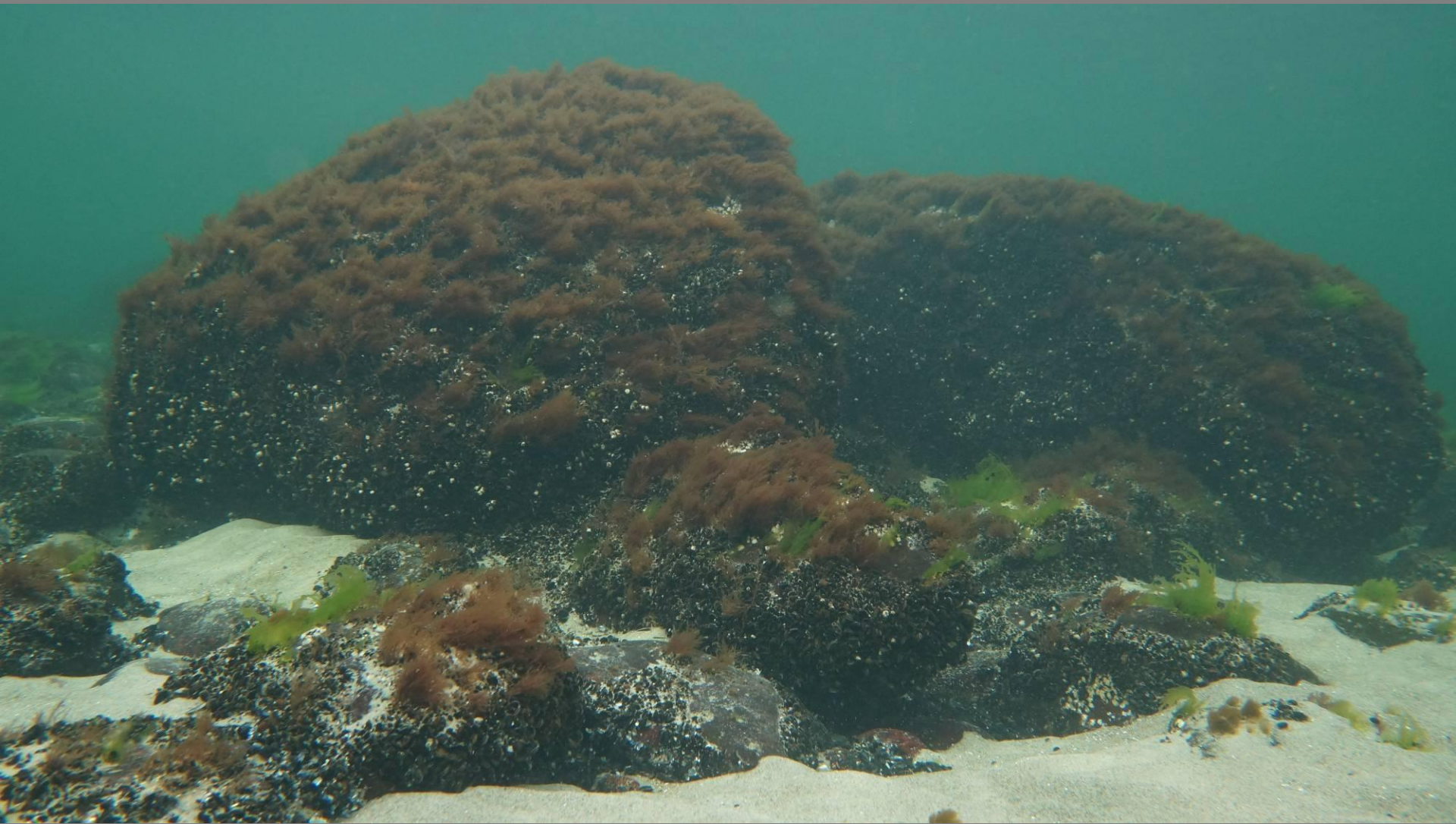




















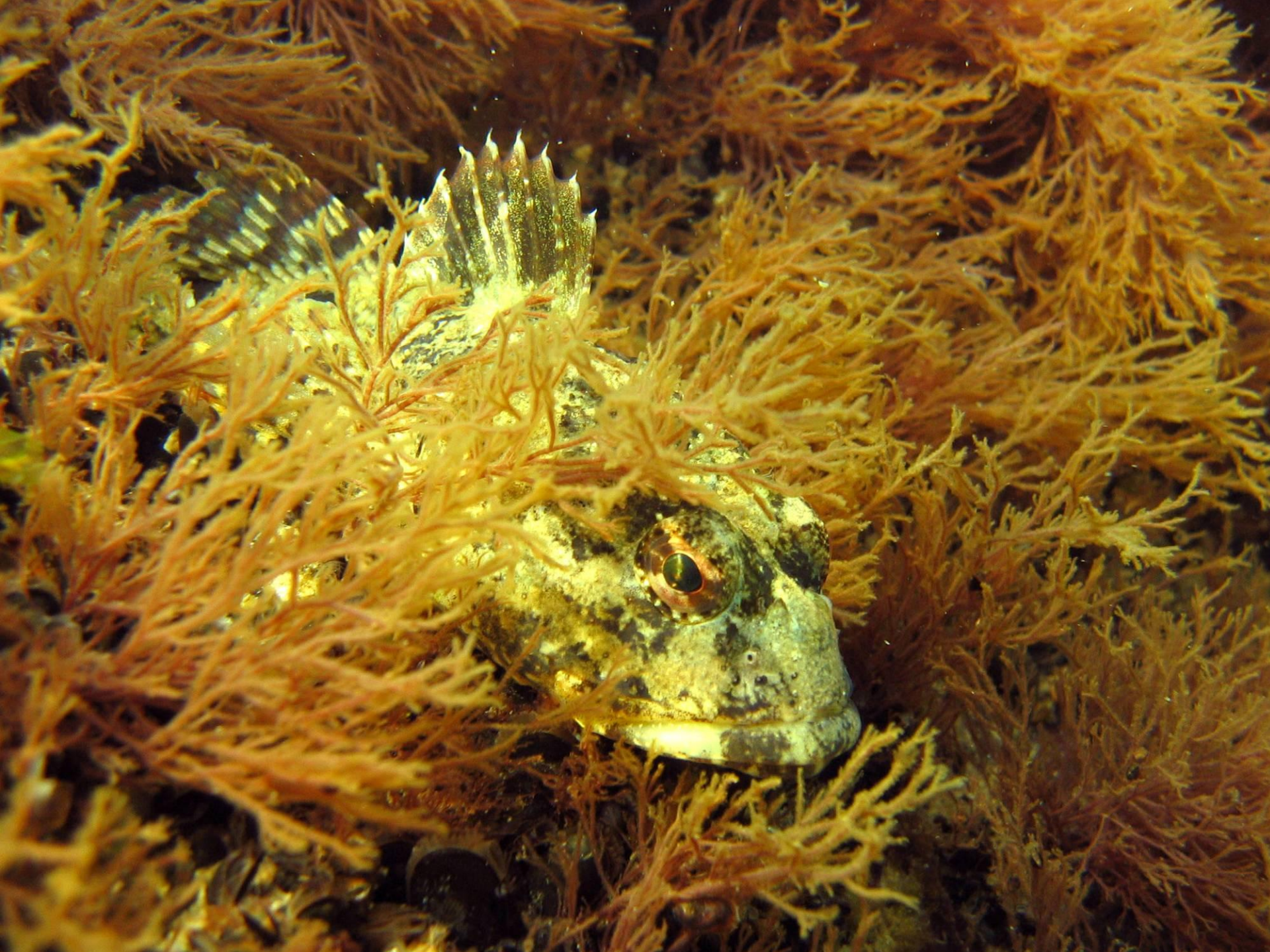


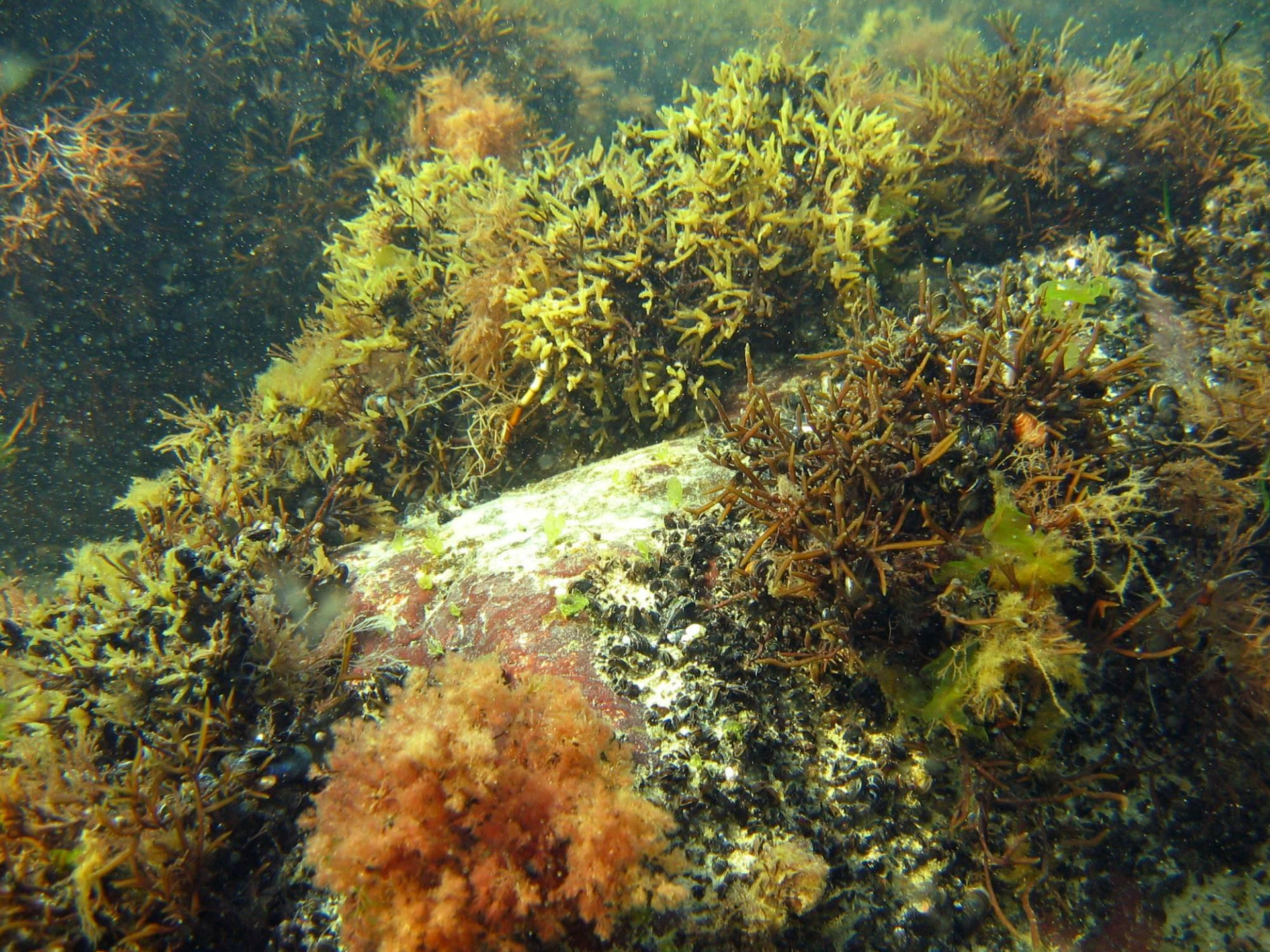




















































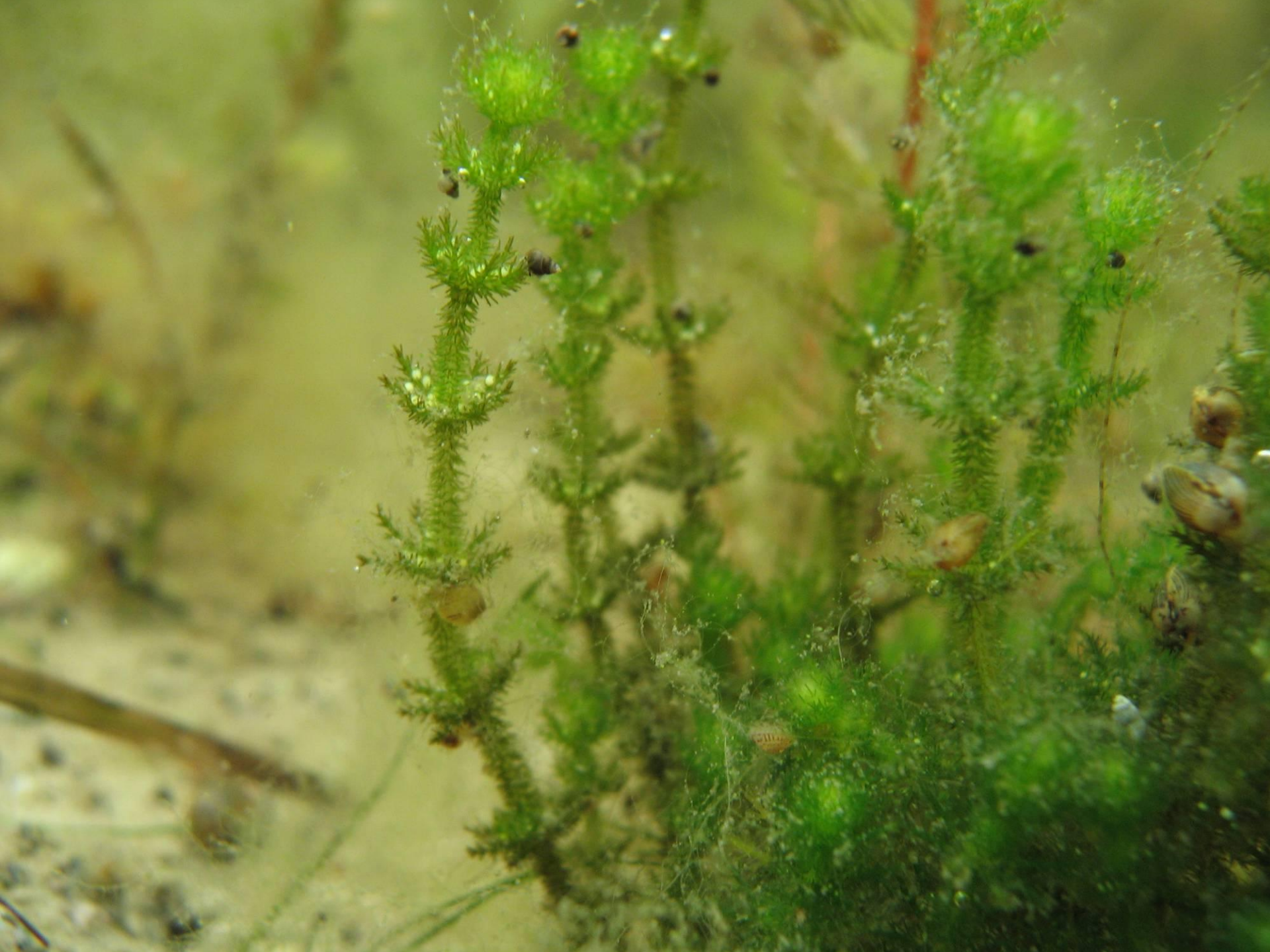










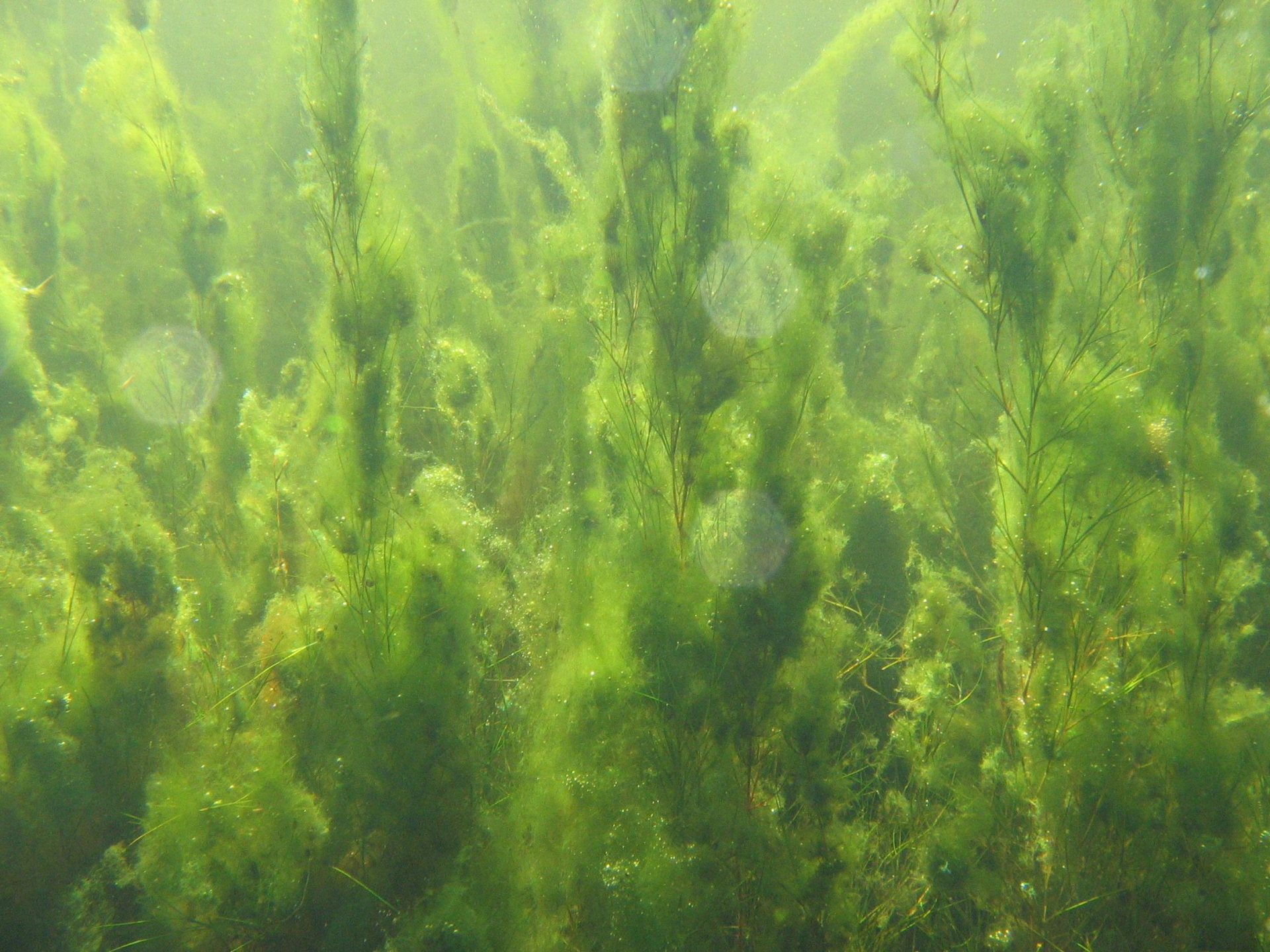










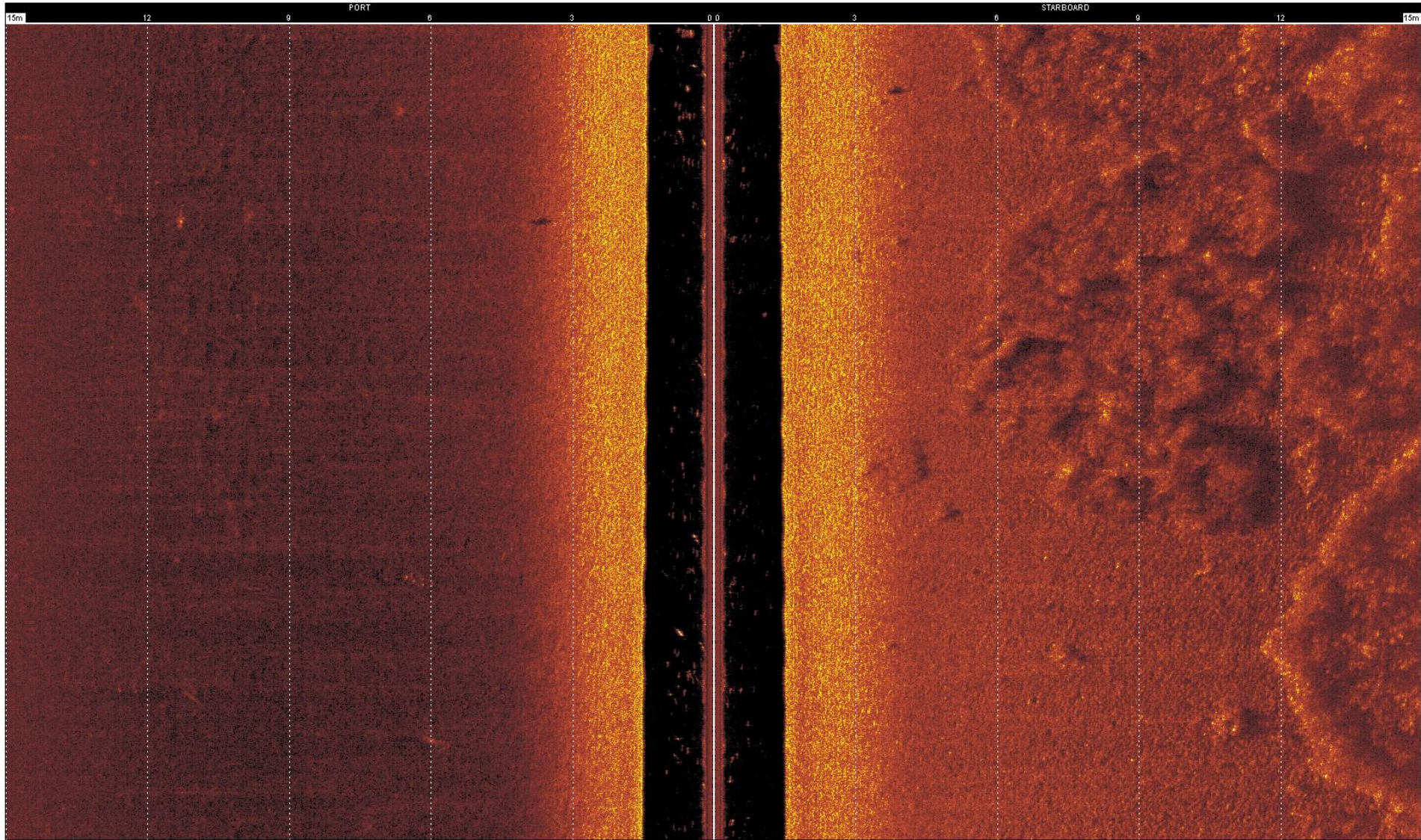




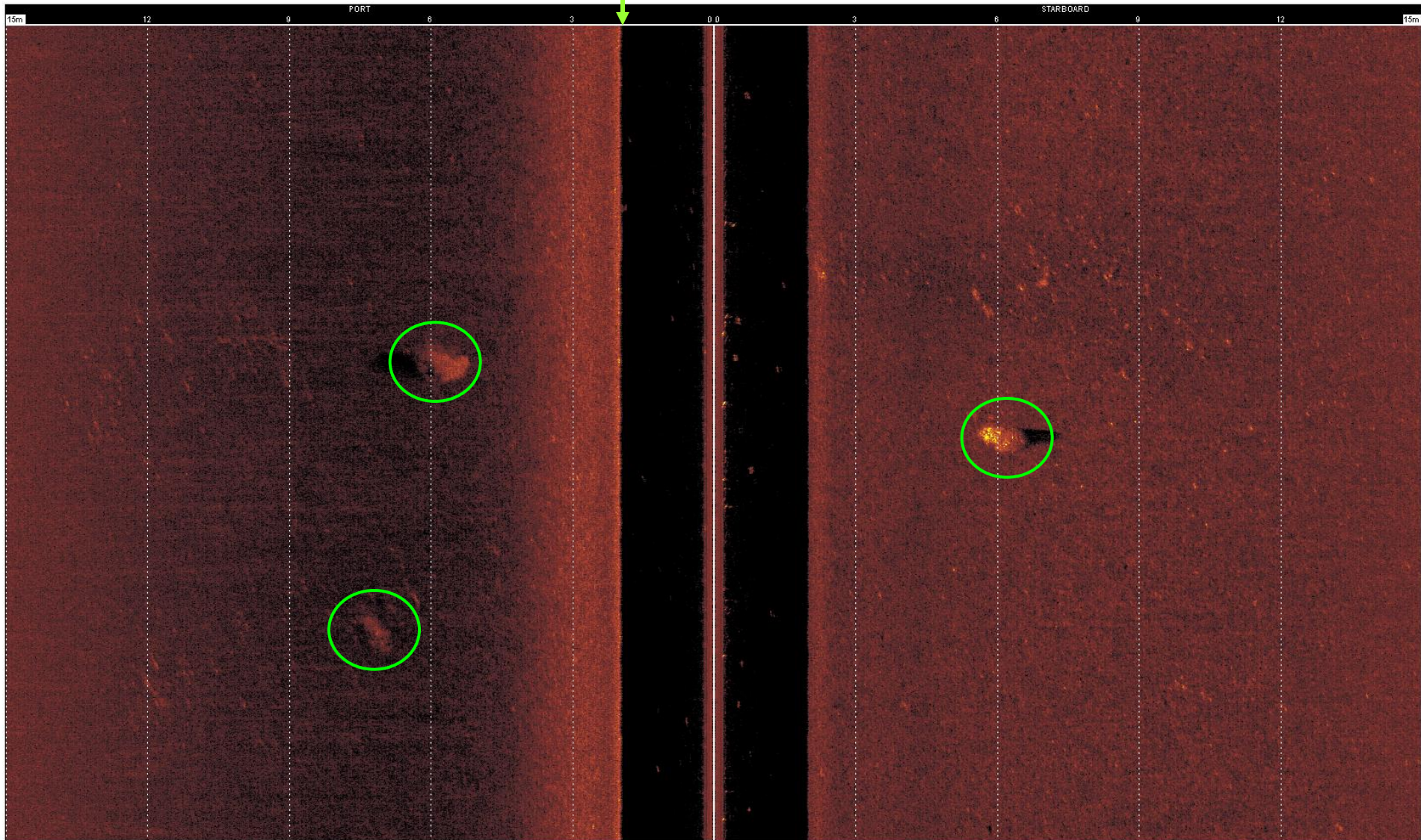




Sidescan Plotter



Sidescan Plotter





Vielen Dank!